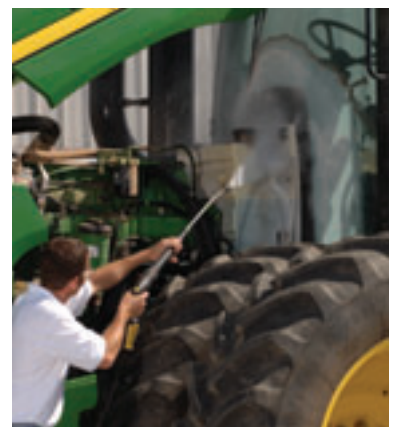


# Compact-Class Electric-Powered Hot Water Pressure Washer for Commercial Applications



## Fully Featured Electric-Powered and Oil-Heated Hot Water Pressure Washer in a Compact Frame

**K**ärcher's HDS Compact machines offer big-model features in a small package. Units feature infinite variation in flow, pressure, temperature, and detergent injection.

- **Super-Efficient Downdraft Burner**
- **Complete Shut-down at Trigger Gun**
- **Steam Capable**
- **Variable Flow, PSI, Temperature and Detergent**

Kärcher's 92%+ efficient and compact downdraft-fired burner uses far less fuel than other brands, giving these units the lowest operating costs in the industry. These HDS compact models are steam capable and come standard with Kärcher's patented commercial axial pump, high-pressure detergent system, anti-scale system, high-temperature shut-off, thermal overload protection, pivoting spray lance, soft-grip gun, 311°F steam hose, and high-impact Power Nozzle. Models are ETL certified to both UL and CSA safety standards.

### TYPICAL APPLICATIONS

- Maintenance
- Hospitality
- Contractors
- Agriculture
- Landscape
- Transportation
- Auto Dealerships
- Livestock

### WHY KÄRCHER



Kärcher is the most trusted name in pressure washers—a fact confirmed when Kärcher was the only brand

selected to clean the famous Mount Rushmore National Monument in 2005.

Founder Alfred Kärcher invented hot water pressure washing in 1950. Today, as the world's largest manufacturer of pressure washers, Kärcher is the recognized innovative leader in the industry with nearly 300 patents.



### Dimensions:

37"L x 24"W x 29"H

- Kärcher's 92% efficient **top-fired burner** delivers more heat from less fuel for the lowest operating costs in the industry
- Pressure-controlled **auto start/stop** ensures motor and pump shut down automatically when trigger gun is released
- High-pressure **detergent system** features integrated 2-gallon soap tank and **metering valve** to accurately and precisely vary the detergent volume
- Robust, three-piston **axial pump** features detergent-resistant brass cylinder head and stainless steel valves; pump is protected by pressure switch, overflow valve and soft-dampening system
- 50' Kärcher **high-pressure steam hose** rated for 311°F connects to the gun with an integrated swivel connection
- **Infinitely** variable operating pressure, water volume, temperature control, and detergent metering
- Air-cooled **motor** is integrated with the pump in a single housing providing efficient energy transfer and smooth, quiet operation.
- Built-in **motor protection** guards against damage caused by high amps and temperatures
- Proprietary **scale inhibiting system** prevents build-up of mineral deposits inside the coil
- **High temperature protection** system shuts down the burner when extreme heat is detected
- **Low-fuel indicator light** illuminates when fuel level is low
- **Low-water protection** prevents the burner from igniting when incoming water levels are low
- Easy-Press **trigger gun** features a shock absorbing soft-grip handle, on-gun swivel connection, and one-finger operation
- Durable 41" insulated stainless steel **wand** rotates 360° under pressure
- Large **control dial** and LED lights provide clear and easy control of important functions
- **Power Nozzle** delivers 40% more impact than standard nozzles for faster cleaning
- Many **safety features** such as ground fault circuit interrupter, pressure relief valve and certification to UL and CSA standards

Model	Order No.	GPM	PSI	HP	Electrical	Amps	Pump	Ship Wt
HDS 2.3/13 C Ed	1.170-605.0	1.2-2.3	450-1300	2.8	120V / 1ph	20	Kärcher Axial	265 lbs
HDS 3.0/20 C Ea	1.170-612.0	1.3-3.0	450-2000	5.7	230V / 1ph	20	Kärcher Axial	270 lbs

**YOUR AUTHORIZED KÄRCHER DEALER:**



Kärcher Commercial Pressure Washers  
[www.karchercommercial.com](http://www.karchercommercial.com)  
[info@karchercommercial.com](mailto:info@karchercommercial.com)  
 888-805-9852 • Fax 800-248-8409